



QPack 5.2 Release Notes



Reviewing changes between version

5.1 And 5.2

Legend

 = *New feature*

 = *Resolved issue*

 = *Improvement*

User & Administration Application

New features



Multi selection of items in the Product Tree.

It is now possible to work in 'multi select mode' in order to perform changes in several items at a time.

Supported operations for multi select mode:

- Check / Uncheck descendents
- Lock / Unlock items / Force unlock items
- Copy / Paste
- Delete
- Change Status
- Edit Assignment
- Change Custom Fields of combo box field type.

For more information:

<http://forum.orcanos.com/viewtopic.php?t=761>

<http://forum.orcanos.com/viewtopic.php?p=891#891>



Copy defects between projects in Solution.

It is now possible to copy defects from one project to another.

A relation is created between the original and the copied defect can be seen under the Relations tab.

The copied defect will inherit all the data from the original defect, except the status and the assignment that will use the default values of the target project.

For more information: <http://forum.orcanos.com/viewtopic.php?p=881#881>



Relink defects between projects in Solution.

It is now possible to re-connect a defect from its original location in one project, into another Parent item from a different project.

The reconnected defect will inherit all the data from the original defect except the status and the assignment that will use the default values of the target project.

History record will indicate that the defect was reconnected.

For more information: <http://forum.orcanos.com/viewtopic.php?t=755>

Coloring settings of charts and grids.

New capability of setting colors to values of an item, such as status, category, est. The special color setting applies in charts and filter grids. This feature will help you quickly Understand the current state of the items. The settings are made in the system level.

For more information: <http://forum.orcanos.com/viewtopic.php?p=885#885>

Coloring settings for test run statuses.

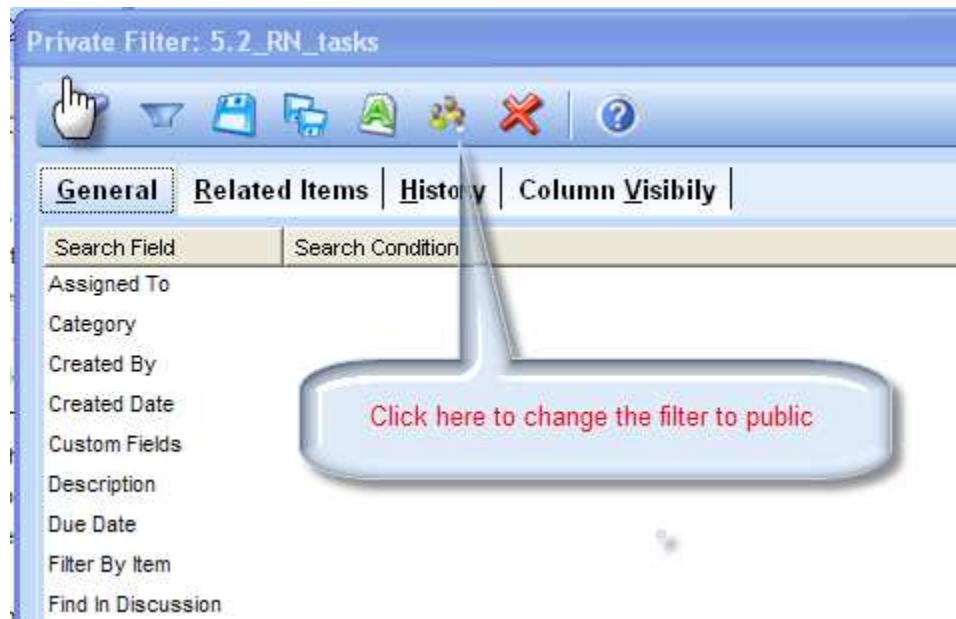
For more information: <http://forum.orcanos.com/viewtopic.php?p=887#887>

Filters – change the filter property from public to private, or from private to public.

Example:

A filter that is already saved as private can be changed to public.

When an operation is completed, the filter will be moved to the public filters area.



! Operation is available for the filter owner only.

Usability improvements



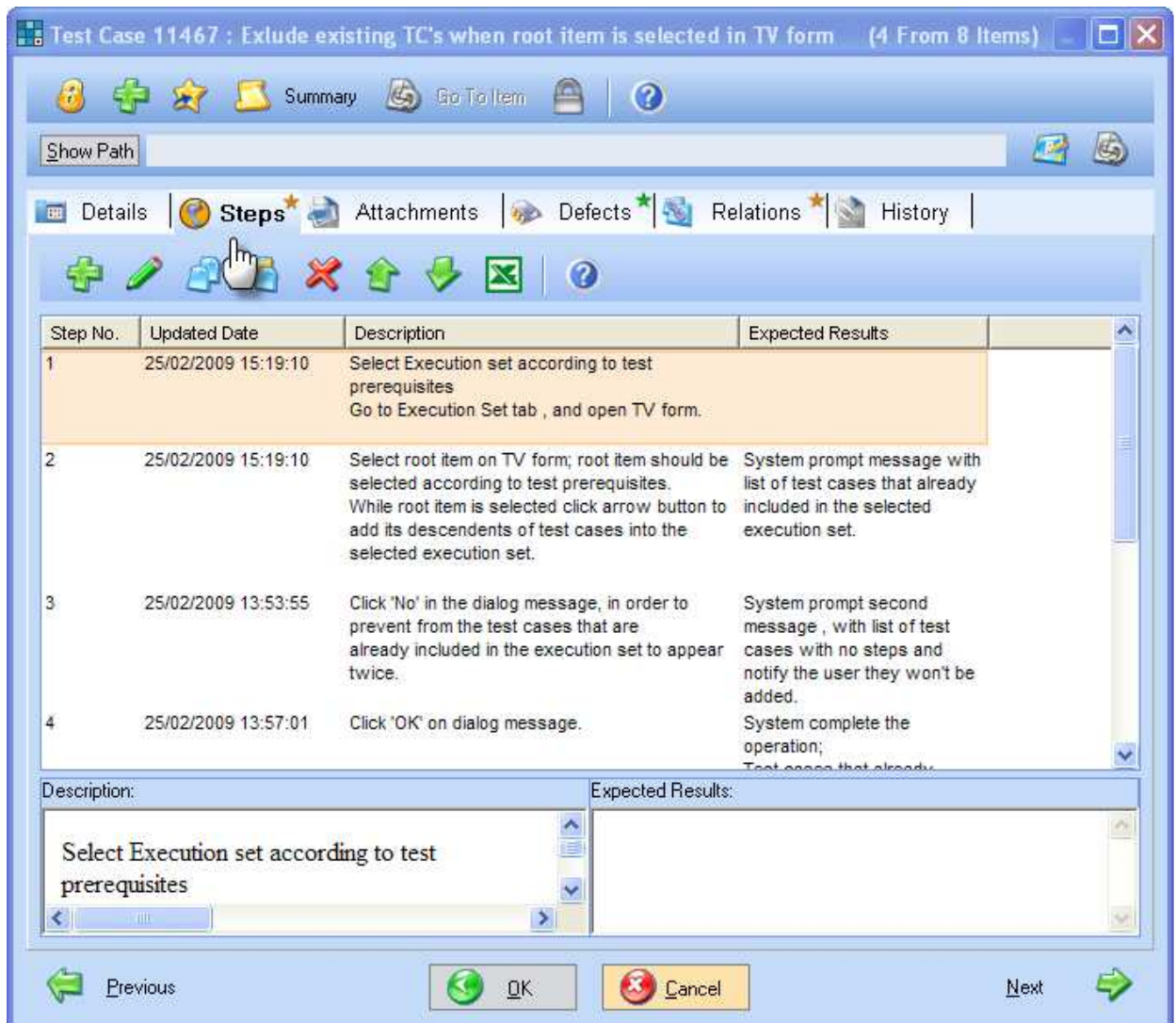
Product Tree management: It is now possible to move the requirements entity in all tabs.



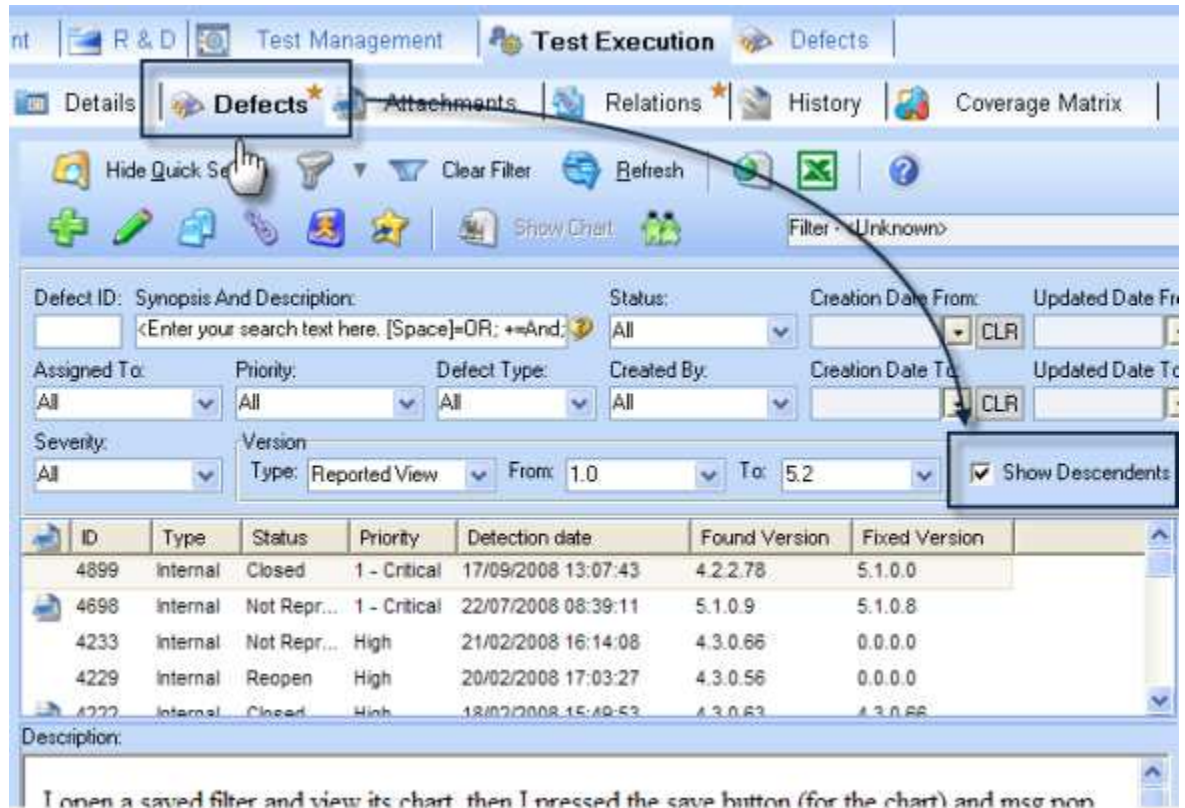
Test Management – the description & expected results are displayed under the Steps grid
 This additional layout option enables the user to review all the steps in the same screen without the need to move between steps.

Pictures are not included in the columns display

Use field chooser to include/exclude the columns of description & expected results from grid.



-  **Item control management – when Defects tab is selected, Last selection in ‘Show Descendents’ check box is saved**



The screenshot shows the 'Defects' tab selected in the application. The 'Show Descendents' checkbox is checked. Below the filters, a table of defect records is displayed:

ID	Type	Status	Priority	Detection date	Found Version	Fixed Version
4899	Internal	Closed	1 - Critical	17/09/2008 13:07:43	4.2.2.78	5.1.0.0
4698	Internal	Not Repr...	1 - Critical	22/07/2008 08:39:11	5.1.0.9	5.1.0.8
4233	Internal	Not Repr...	High	21/02/2008 16:14:08	4.3.0.66	0.0.0.0
4229	Internal	Reopen	High	20/02/2008 17:03:27	4.3.0.56	0.0.0.0
4227	Internal	Closed	High	18/02/2008 15:49:53	4.3.0.63	4.3.0.66

 **Document Properties**

During the process of documents generation, the system will include information about the items' Revision and version in the document properties summary report.

Test Execution management



Execution History filter – New generation Filter attributes are updated to match the filter capabilities.

New filter attributes are added:

- 'Show Current State' – retrieve results from last run cycle only.
- 'Assigned to Tester' – retrieve current assignment of Tester to test cases in execution set.

Removed filter attributes:

- Start Date
- Due Date
- Lock By
- Updated By
- Updated Date
- Run Status
- Include No Run Tests

Additional changes;

- 'Test Run' option is removed from the 'Grid Level Type' filter attribute.
- 'No Run' status is added to the 'Last Test Run Status' & 'Steps Status' filter attribute.

! Old Filters that are saved with attributes that had already been removed, will not function after you upgrade to QPack 5.2



Execution history filter – 'Group By' option is added to the grid.

Execution History

Drag a Column Header Here to Group by that Column

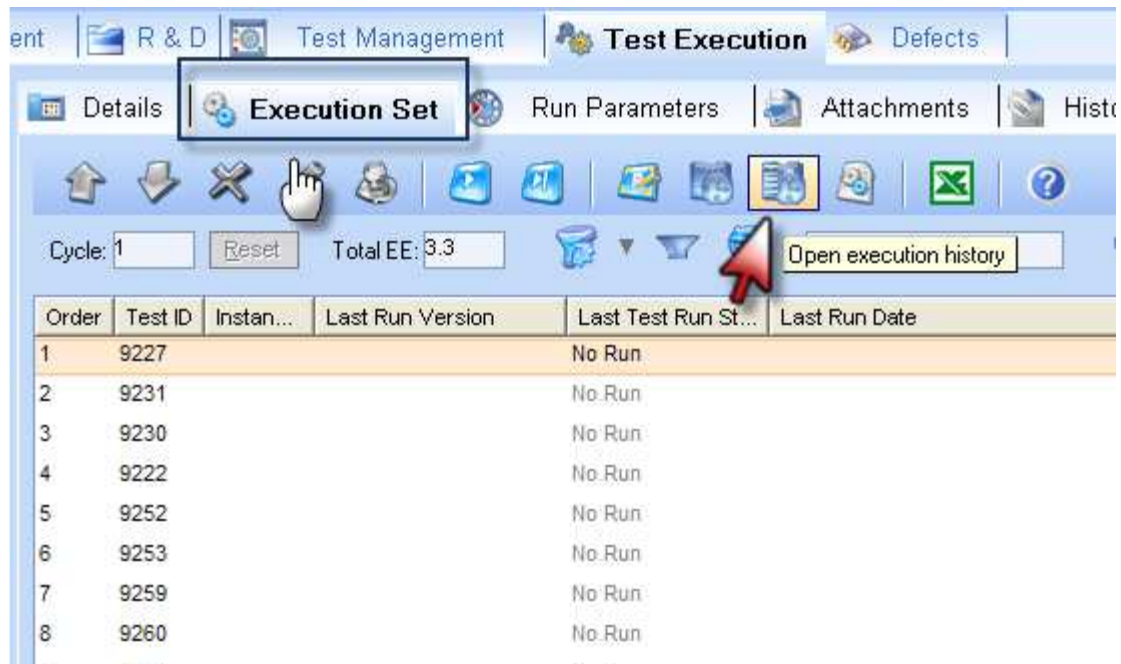
Cycle	Run Date	Test ID	Test Run Status	Def...	Test pr...	Executi...
1	02/03/20...	11476	Pass		QPack	Executio...
1	02/03/20...	11467	Pass		QPack	Executio...
1	02/03/20...	11475	Pass	No	QPack	Executio...
1	02/03/20...	11464	Pass	No	QPack	Executio...
1	02/03/20...	11465	Pass	No	QPack	Executio...
1	02/03/20...	11496	Fail	Yes	QPack	Executio...
1	25/02/20...	11465	Pass	No	QPack	Executio...
1	25/02/20...	11465	Fail (Stop)	Yes	QPack	Executio...
1	25/02/20...	11477	Pass	No	QPack	Executio...

Field Chooser

Allow Grouping



Execution history filter utility can now be opened from Execution Set as well.



Fixed:

When filtering from several execution sets by using the filter attribute 'Execution Set Name', The filter now returns results only from the selected execution sets.



Fixed:

Open item details of a test case in edit mode from the Execution Set grid.



Fixed:

IDs of test cases are shown in the execution history results.



Fixed:

Filter for test cases and test steps with the status 'No Run'.



Fixed:

Filter for test cases with the status 'No Run' from historic cycles.



Fixed:

The system prevents the user from adding twice the same test case into the execution set.

General Fixes

**Fixed:**

'Go To Item' from search grid in filter utility now opens the selected node of an item in the Product Tree in all cases.

**Fixed:**

When a new item is added to the Product Tree, the newly added item's position is now automatically refreshed and the item is presented in its correct place.

**Fixed:**

Preview items with relative path in description.

**Fixed:**

Missing indication when the Project icon is selected in the filter attribute 'Filter By Item'

**Fixed:**

Data in the custom fields is transferred correctly while defects are being copied.

**Fixed:**

While defects are being copied, the relation between the original defect and the copied defect is shown in the Relations chart.

**Fixed:**

Drill down to details of a copied defect in the Relations chart.

**Fixed:**

Word Diff supports .docx files when comparing records of item revisions in the history tab.

**Fixed:**

Creating new custom fields in admin application in some cases returns the irrelevant message "the name is already in use"