



## **QPack 5.0 Release Notes**

---



## 5.0.0.39

### Legend



= New feature



= Resolved issue



= Improvement

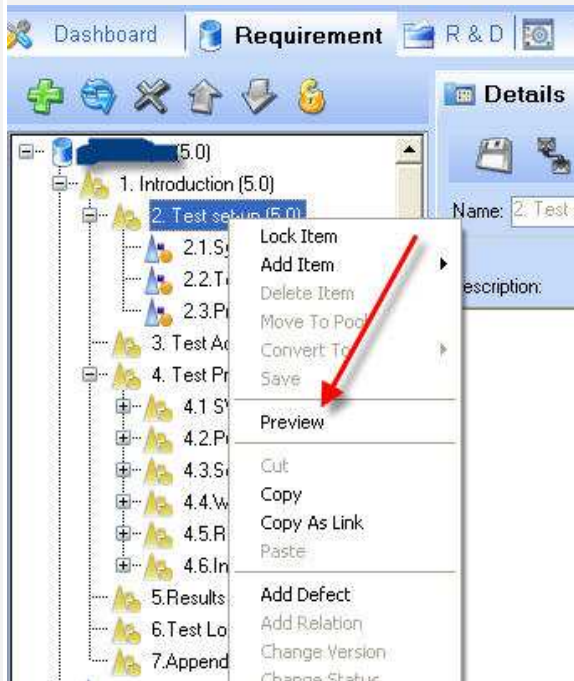


= Removed feature



### Allow Preview of Tree View in HTML, including editing

1. Select a Tree View node and use right click to open mouse menu
2. Click the Preview option to view the selected item and all its descendents in html pages.



\* Preview of requirements and market requirements is also possible from user dashboard.

\*\* **Edit preview feature does not support Hebrew.**



### Allow edit of preview HTML form

Use 'Edit' button in the html pages to open HTML editor.

The screenshot shows a vertical list of requirement entries. Each entry consists of a title, a reference ID, and a 'Rename' link. Below each entry are two links: 'Back to Top' and '[Edit]'. A red arrow points to the first '[Edit]' button.

[Back to Top](#)

---

2.2. 4.2.2.Preparation & dependencies [REQ\_HD-315] [\[Rename\]](#)  
Steps 6 could get failed (depends in the TR Freq) - Refer to Appendixes

[\[Edit\]](#)

[Back to Top](#)

---

2.2.1. 4.2.3. Test execution & results [REQ-409] [\[Rename\]](#)

[\[Edit\]](#)

[Back to Top](#)

---

3. 4.3.Security aspects [REQ\_HD-317] [\[Rename\]](#)

[\[Edit\]](#)

[Back to Top](#)

---

3.1. 4.3.1.Purpose [REQ\_HD-318] [\[Rename\]](#)

[\[Edit\]](#)

[Back to Top](#)

 **Filter Columns Visibility**

This improvement in the filter settings allows the user to define filter layout for filter results display. User can exclude irrelevant columns from filter results, and rearrange the order of columns appearance as well.

1. Open Advanced filter form > Column Visibility tab
2. Set visibility of each column.
3. Use the green arrows above for columns reorder.

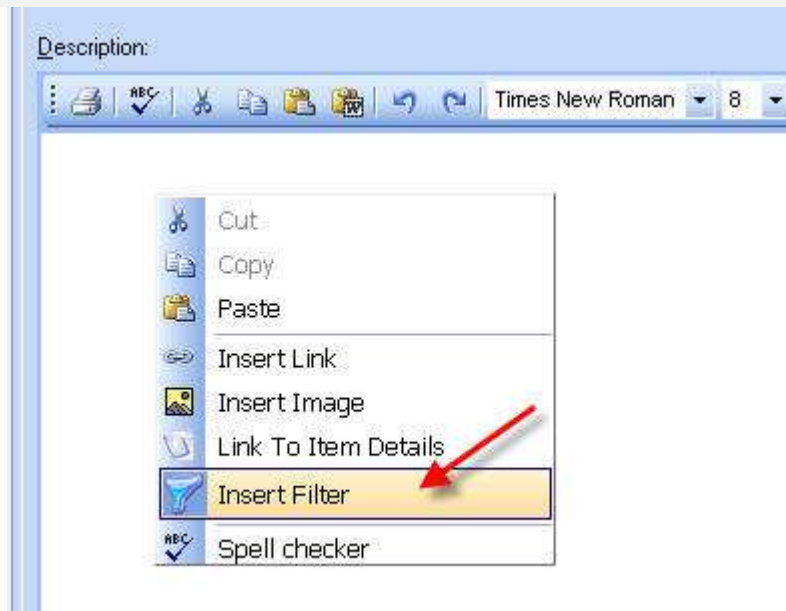


**Dynamic filters: Generate the most updated reports in just one click!**

Filters that are saved to the system in advanced filter forms can be added into any item description.

When generating Word document, HTML preview or HTML item details form QPack retrieves the filter results and prints the results in a grid within the Word document.

1. Place mouse cursor on item description (ensure item is locked)
2. use right click to open menu > select Insert Filter
3. Select filter type (items, defects, etc.)
4. Select the filter name to include in the item's description
5. Link of the filter appear in the item's description

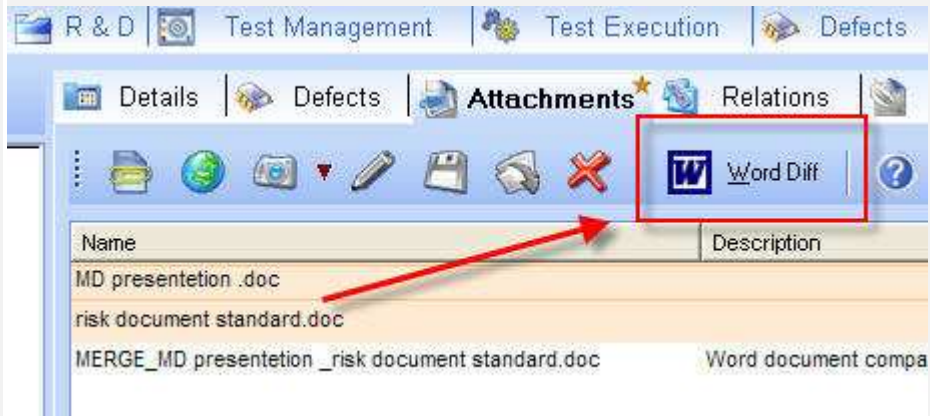




### Attachments Management

Save Word attachment revisions, allow also diff and merge.  
Comparison and merge attachments on grid

1. Open Attachments tab and select 2 attachments on grid
2. Click the 'Word Diff' button
3. Accept/Decline the changes
4. Click 'Save' button to merge into new attachment
5. Name the new merged document in the 'QPack Editor –Save As' form



### Document Management System (DMS)

Manage new type of QPack item: Doc item.  
The user can add Word attachment to the DMS pool. Once added, this document item can be managed.  
QPack also allows to manage digital signature on these items



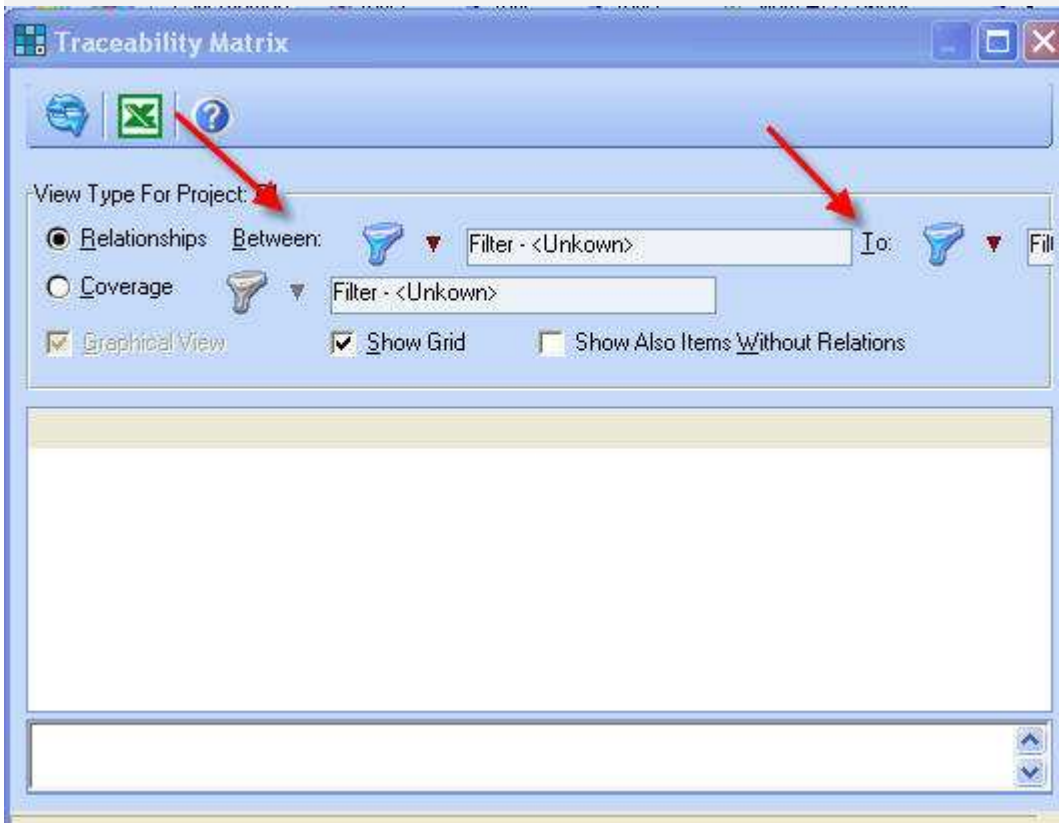
### Relation history management:

Save add/del relations actions to item history.



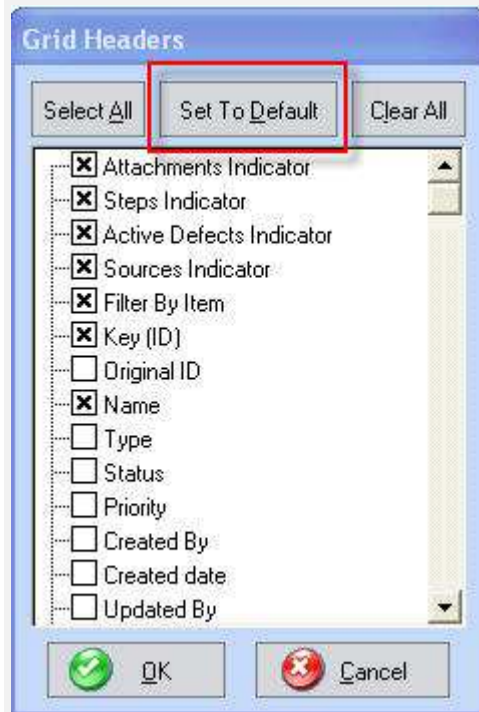
### Traceability Matrix Relations Filters

Use filters to select related items the traceability matrix.





Reset Grid Header settings to Administration default settings.



Allow filter Execution Sets by Last Run Status

### Usability issues



Expand tree view nodes with mouse right click menu.



Increased size of up to 255 chars for item name, include defect name.



Create Relations between items from different projects.

### Hebrew/German support Fixes.



Document generator



'Filter by Item' column under quick search.



Save comments to History and Relation tabs.



Solution tab under Defects tab.

**Bugs Fixes**

-  Custom fields of MR appearance in user's application.
-  Generated documents appear In some cases with Background image.
-  Filter by Advanced filter form > History tab > Changed By.
-  Save filter settings of Advanced filter form > Related Items tab.
-  Duplicate items in Document Generator > Relation Appendix table.
-  Updated test run steps when running not completed test that was changed.
-  Execution History filters by dates, run parameters, execution name.
-  Idle time functionality
-  Converting requirement with task under it to requirement heading.
-  Appearance of saved filters on Document Generator filters list. (when generate document by filter).
-  Paste pictures from word into item's description.
-  Changes on item in maximize mode are saved when editor is closed
-  Default value of 'Link Type' System table apply in User's Application.
-  Open branched items from Relations graphic charts.